

The logo for EHTEL, featuring the letters 'EHTEL' in a bold, dark blue font. The letter 'E' is stylized with a light blue horizontal bar. The letter 'L' is also stylized with a light blue vertical bar. The background of the slide features a large, stylized graphic of a megaphone or speaker, with light blue lines radiating from its opening, set against a gradient of blue and white.

Collaborating for Digital Health and Care in Europe

## Digital therapeutics and care at home

EHTEL Innovation Initiative webinar, 3 June 2020, 12 00 – 13 30 CET

 @ehtel\_ehealth

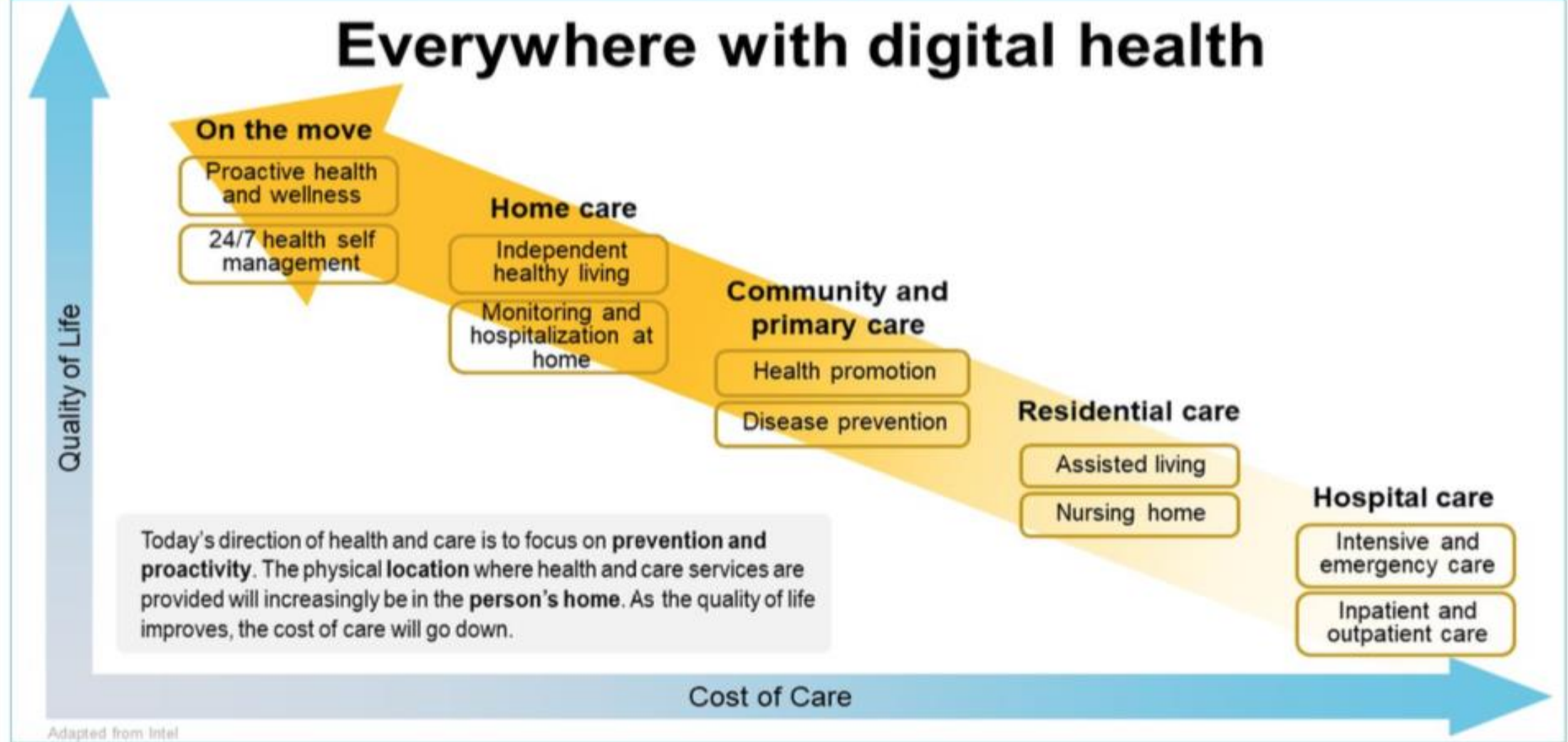


# Digital Therapeutics, Artificial Intelligence, and Virtual Coaches

How can “hospitals at home” or care at home benefit from digital therapeutics?

# A health and care paradigm shift

## Everywhere with digital health

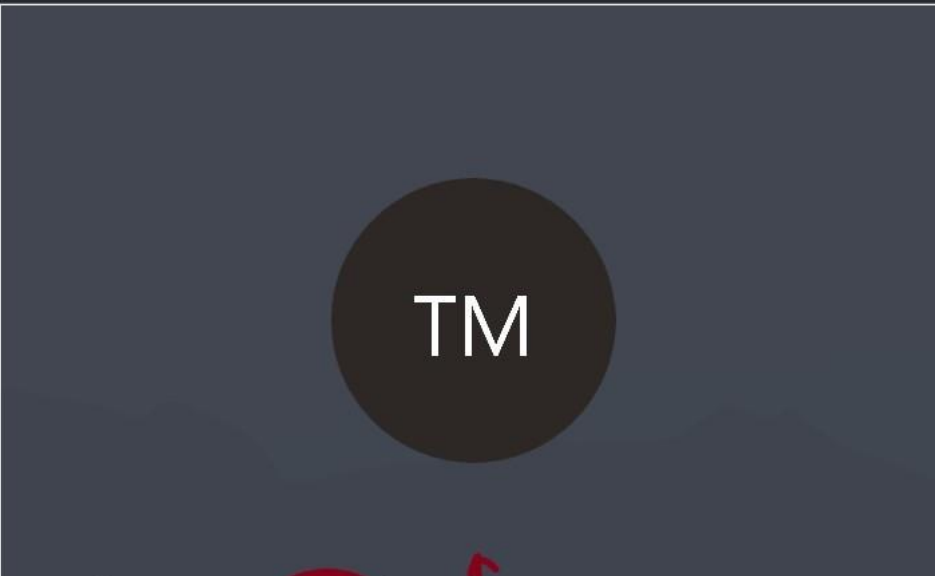


# Agenda: Digital therapeutics and care at home

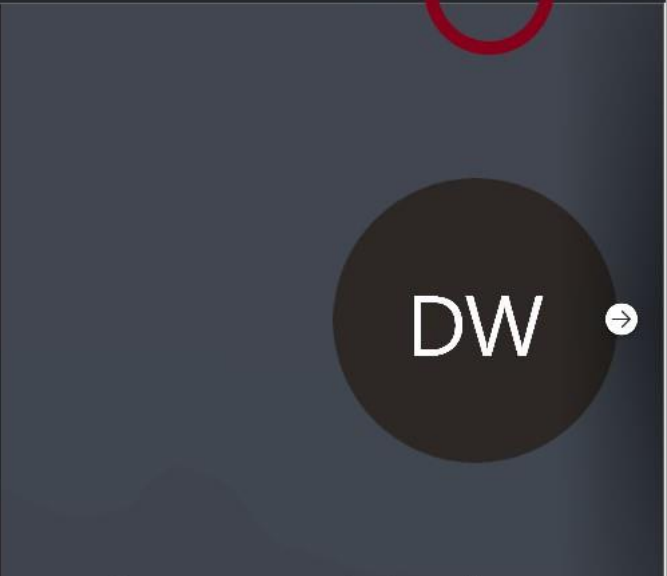
- **Introduction:**  
Juan GUANYABENS (TicSalutSocial) and Diane WHITEHOUSE (EHTEL)
- **The shift of care from hospital to home: The example of NWE-Chance**  
Ed DE KLUIVER and Astrid VAN DER VELDE (Isala Heart Centre, Netherlands, and NWE-Chance)
- **The shift or care from hospital to home: An example in the neuro-rehabilitation domain**  
Riccardo RE and Massimo CAPRINO (CCP, Italy, and vCare)
- **What does digital therapeutics have to offer & how can artificial intelligence help?**  
John CRAWFORD (CrawfordWorks and EHTEL honorary member)
- **Discussion with attendees**
  - In your **country, region or initiative** in what way (**how**) is care moving from the hospital to the home? What **concrete examples** can you offer?
  - In your **country, region or initiative** have you any **concrete experience of digital therapeutics** (especially artificial intelligence-enabled digital therapeutics)?
  - What **major benefits** do you see in this field? What **major challenges**?
- **Summary and wrap-up:**  
Juan GUANYABENS (TicSalutSocial) and Diane WHITEHOUSE (EHTEL)



ML



TM



DW

Marc Lange (EHTEL)

Tino Marti

Diane Whitehouse

### PROJECT REVIEW

#### 5. Recommendations concerning future work, if applicable

CR1.R04: Most of the deliverables follow a 3-iteration approach and there is no indication of what will be covered in each iteration. In that sense it is not easy to judge whether a deliverable version is complete. It is recommended that a matrix with these deliverables, iterations and expected advancements from one iteration to the next one, be delivered.

- D8.8 Governance model – V1 [M18 – June 2020]
- D8.9 Governance model – V2 [M36 – December 2021]

Tino Marti is presenting